



Big Dutchman®



Pure Line

Separate provision of roughage:
manual and automated solutions

Use of organic manipulable material for pigs of all ages

Pigs need to be occupied! They have to drink, feed and rest – but they also need to be active during the remaining time and search for diversion and toys. In order to satisfy this need and to prevent behaviour problems, Big Dutchman offers different solutions so you can

deliver and offer organic manipulable material to your pigs as easily as possible. Solutions include:

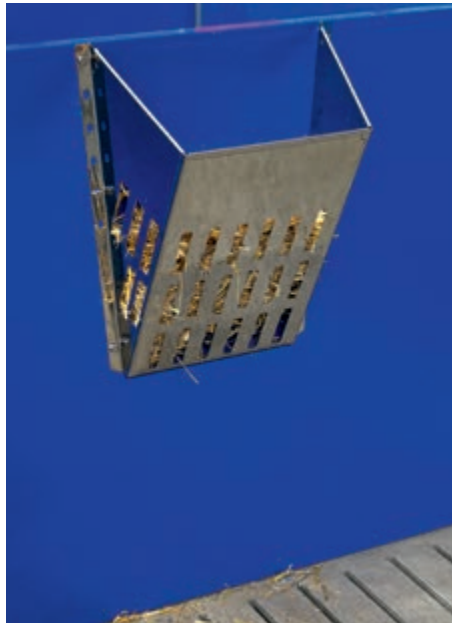
- straw feeders and racks
- pellet feeders
- our dispenser for roughage

Let our experts advise you towards finding the best option for your individual requirements.

Straw feeders and racks



Installation standing in the pen or fitted into the partition. Filling can be manual or automated.

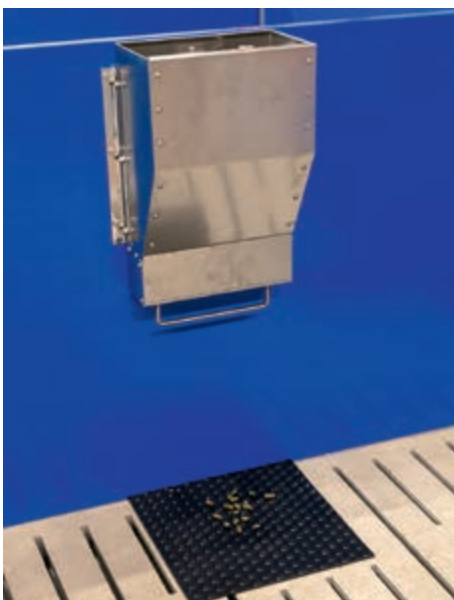


Stainless steel straw rack

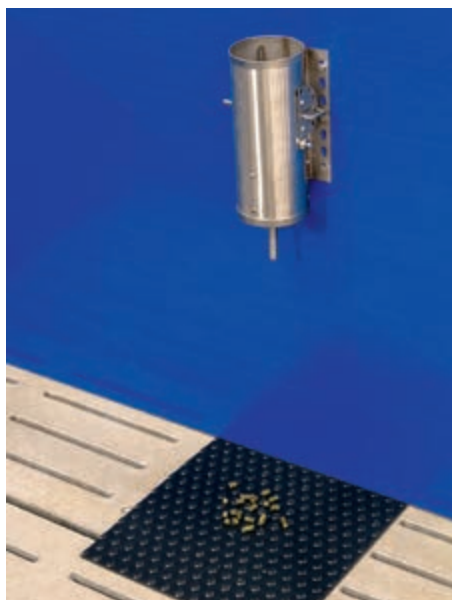


Straw rack

Pellet feeders



Pellet feeder: manual or automated filling



Pellet feeder: manual or automated filling



Pellet feeder with funnel: manual or automated filling

Dispenser for roughage

Roughage has a positive influence on gut health and thus on your pigs' well-being. Our dispenser allows you to store straw in a very practicable way and to automate roughage provision. The dispenser can be installed either in the feed kitchen or outside, in which case it has to be equipped with a lid. The

dispenser comes with a mixing blade, a discharging auger and a transfer unit to the pipe conveyor. The mixing blade effectively prevents feed in the hopper from bridging. The discharging auger and the DR 1500 pipe conveying system transport the roughage into the barn, where it is distributed to your pigs.

Two dispensing options are possible:

- flap proportioner with a volume of 15 litres
- pneumatic valve



Dispenser for roughage (straw, maize silage, hay, lucerne, etc.)



Straw dispensing with a pneumatic valve



Special transfer unit between the dispenser's discharging auger and the DR 1500 pipe conveying system



Pneumatic valve for dispensing in the barn



The DryRapid BD 103 controller controls the entire system

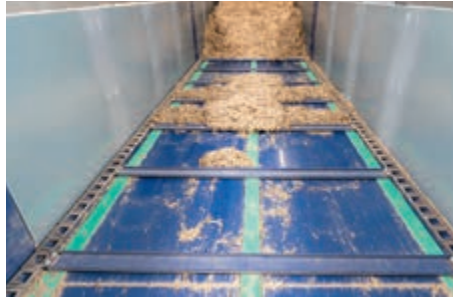
Features

- ✓ depending on the hopper extension, capacities range from 2.4 to 8 m³;
- ✓ the special transfer unit between the auger and the pipe conveyor chain ensures reliable transport, especially when using straw;
- ✓ two lid versions are available: electrical or manual opening and closing (using a winch);
- ✓ the dispenser is made entirely of stainless steel;
- ✓ automatic control with the BD 103 controller.

We also offer a straw bunker with scraper floor for up to three rectangular bales. Our well-proven DR 1500 pipe conveying system transports the straw into the barn.



Dosing bunker with scraper floor for straw storage



View into the straw bunker



Breaking up straw bales with rollers

Animal-friendly management systems, a good climate in the barn, emission reduction and labour efficiency are the requirements of today and tomorrow. For more PureLine products

giving increased animal welfare with environmental friendliness, sustainability and profitability, continue reading or check our website, at www.bigdutchman.com.

Let our experts advise you. In a detailed consultation, they will help you find the best solution for your requirements.



Playing chain with wooden ball



Holder for chewing sticks



Scratching post



Big Dutchman.

Europe, Middle East & Africa:
Big Dutchman International GmbH
 P.O. Box 1163 · 49360 Vechta, Germany
 Tel. +49(0)4447 801-0 · Fax -237
big@bigdutchman.de
www.bigdutchman.de

USA: Big Dutchman, Inc.
 Tel. +1 616 392 5981 · bigd@bigdutchmanusa.com
www.bigdutchmanusa.com

Brazil: Big Dutchman (Brasil) Ltda.
 Tel. +55 16 2108 5310 · bdbr@bigdutchman.com.br
www.bigdutchman.com.br

Russia: 000 "Big Dutchman"
 Tel. +7 495 2295 161 · big@bigdutchman.ru · www.bigdutchman.ru

Asia/Pacific: BD Agriculture (Malaysia) Sdn. Bhd.
 Tel. +60 3 334 83 555 · bdasia@bigdutchman.com · www.bigdutchman.com

China: Big Dutchman (Tianjin) Livestock Equipment Co., Ltd.
 Tel. +86 10 6476 1888 · bdcsales@bigdutchman.com
www.bigdutchmanchina.com

