

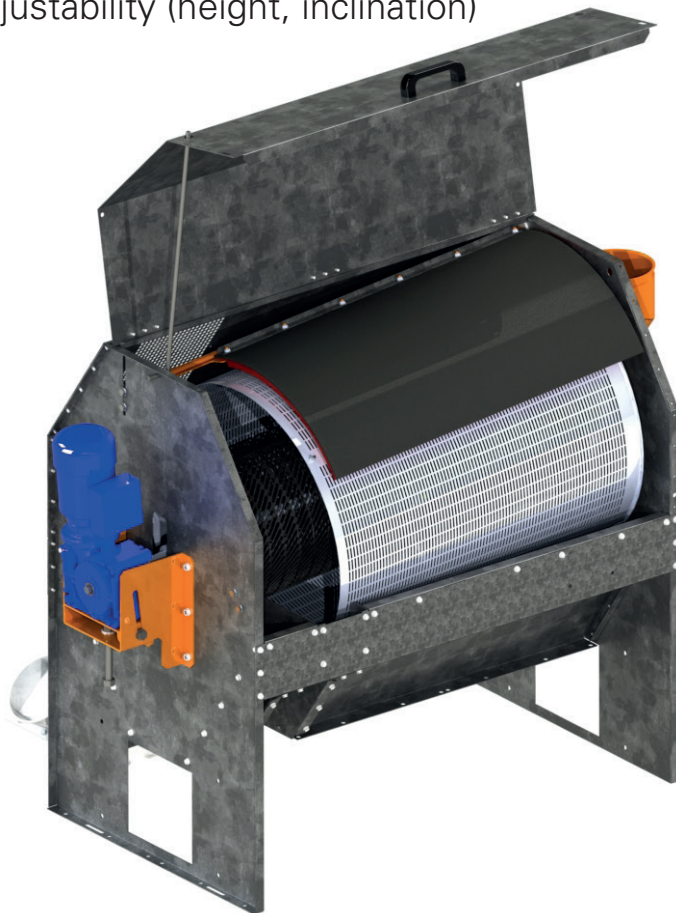
Drum cleaner T1



Clean your crops with the Big Dutchman drum cleaner T1

Only available at Big Dutchman Scandinavia

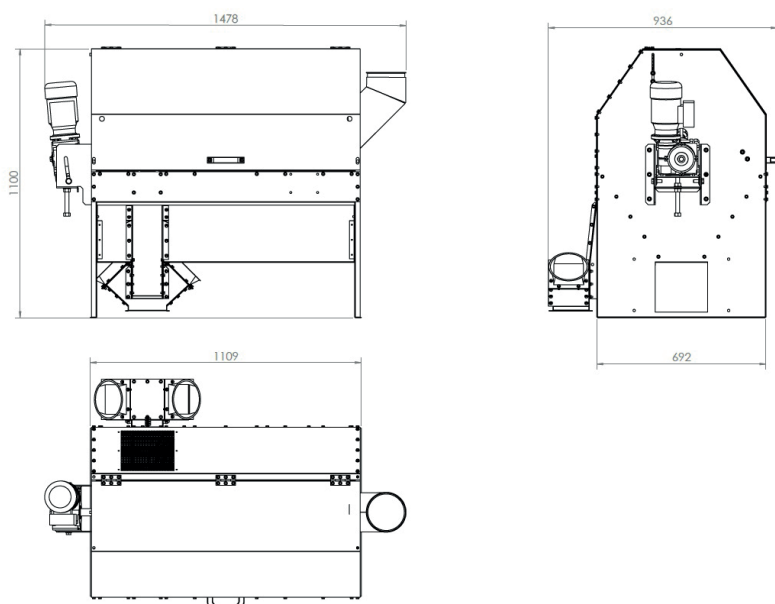
- High efficiency
- A high cleaning effect ensures better animal health
- A simple design with few moveable parts keeps maintenance costs at a minimum
- Option for replacement of the screen, and many available screen sizes ➡ can easily be adapted to different crops
- Good adjustability (height, inclination)



Drum cleaner T1



Drawings with measurements



Technical data

| Description | Size | Unit |
|------------------------|--------------|------|
| Engine | 0.55 | kW |
| Outer screen hole size | 1.5 x 20 | mm |
| Inner screen hole size | 7 x 40 (45°) | mm |
| Capacity | 6 | t/h |
| Weight (incl. engine) | Approx. 140 | kg |

Design

The drum cleaner consists of a housing equipped with an inlet, an outlet for cleaned grain, an outlet for cleaned sand, an outlet for larger cleaned particles and a rotating axle mounted with two screens.

It also comprises an outer screen for sand cleaning and an inner screen that cleans of larger particles.

Function

The crops head through the inlet into the inner rotating screen. The grains and smaller particles fall through the inner screen and land on the outer screen.

Particles that cannot pass through the inner screen are led into the outlet for the larger cleaned particles.

The grains and smaller particles continue on to be cleaned in the outer screen.

The smaller particles, such as sand, fall through the outer screen and down the outlet for cleaned sand.

The cleaned grains go to the outlet for cleaned grain where they are transported away or go directly into a mill.

The cleaned particles can either be collected in a container or led away through augers.

Also available with suction kit.

